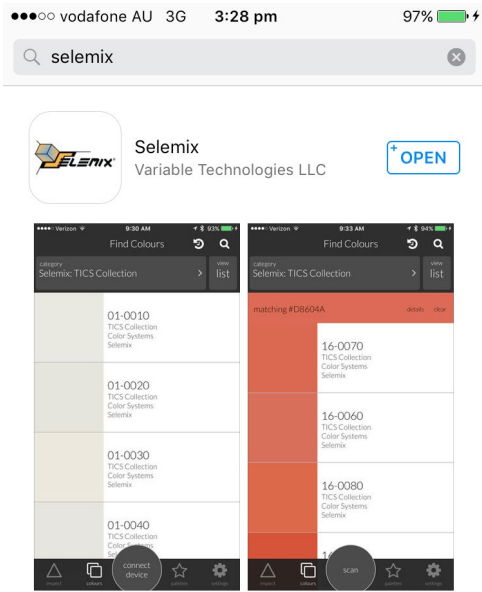


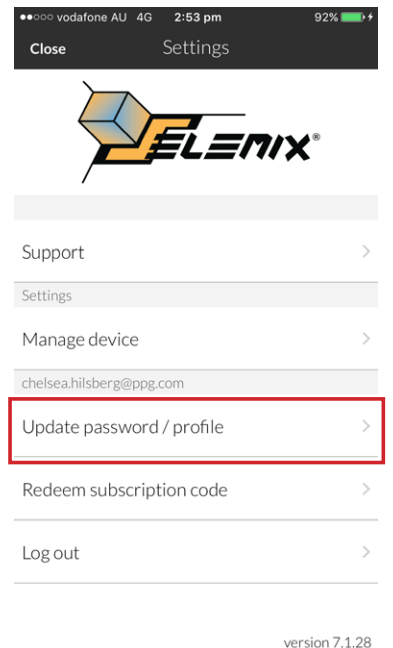
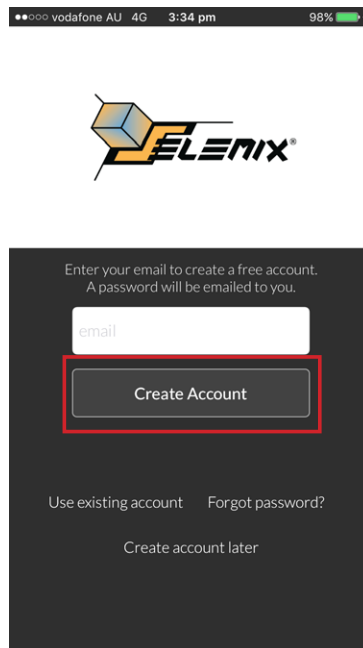
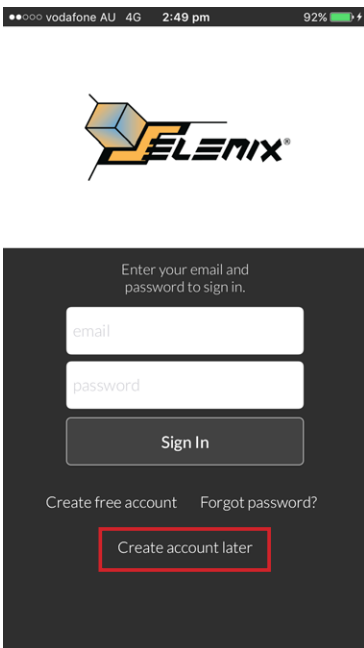
DOWNLOAD

Go to the Apple App Store and download the *Selemix* App to your device. *The iOS app is compatible with the iPhone 5 and later and also iPad 3rd generation or later.*



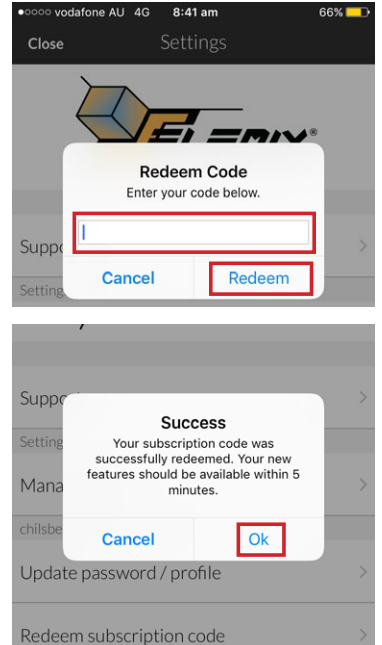
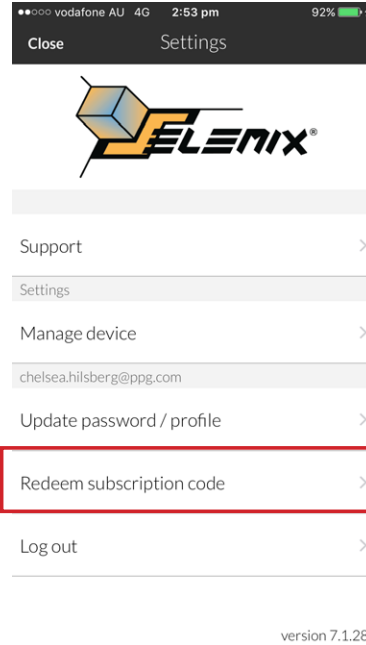
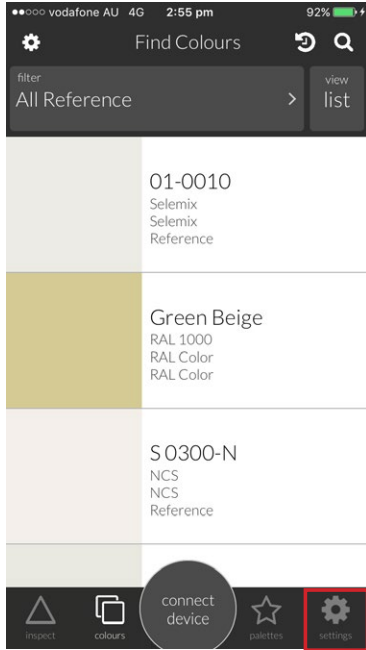
SIGN UP

Open the *SELEMIX* App and you will be presented with a login screen. Press 'Create Free Account' and enter the email address you wish to use. An email will be sent to your inbox with a temporary password. Use your email address and password to login to the App. *If you wish to change your password, once logged in, go to your account settings and update.*



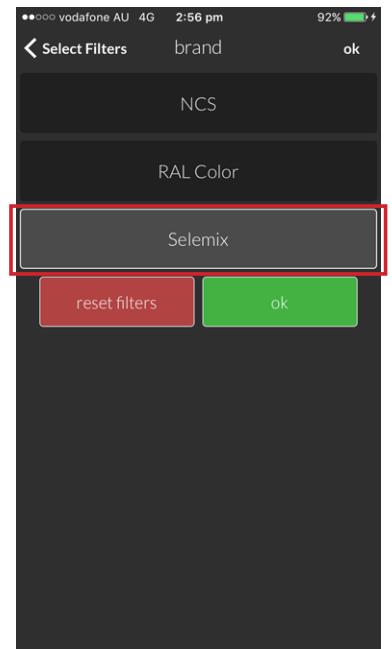
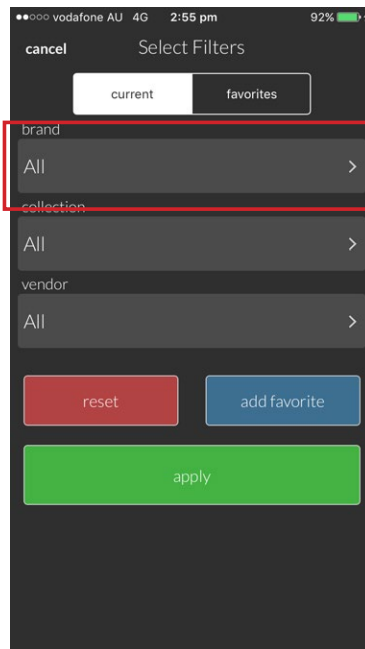
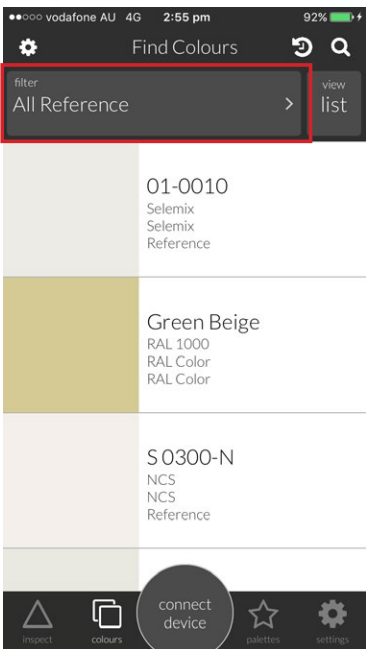
REDEEM

Before using this device, you must set up the app to read *Selemix* colours. Inside your *Selemix* Colour Picker package there is an access code. Go to settings and press 'Redeem subscription code'. Type in the code and press ok. A message will appear confirming the success of the code activation. *You may need to restart your app after entering the code.*

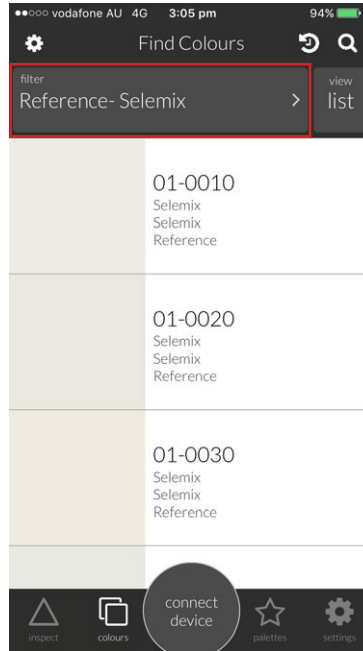
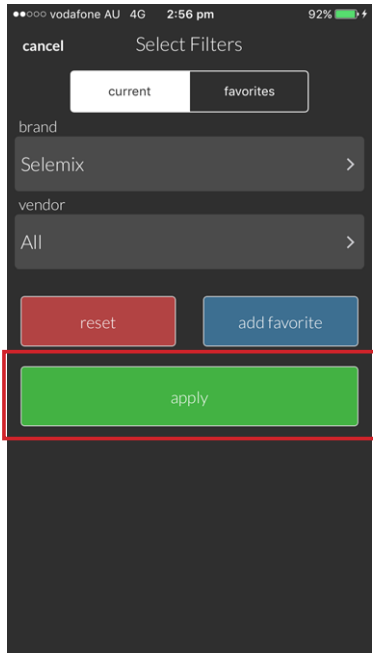


SETUP SELEMIX COLOUR

You must now setup the filter preferences to only display *Selemix* colours. In the top bar of the main screen your filter setting will display 'All Reference'. Press this to display the filter settings. Select 'brand' and the *Selemix* option will appear. Select '*Selemix*' and press 'ok' and continue to press 'apply filter'.



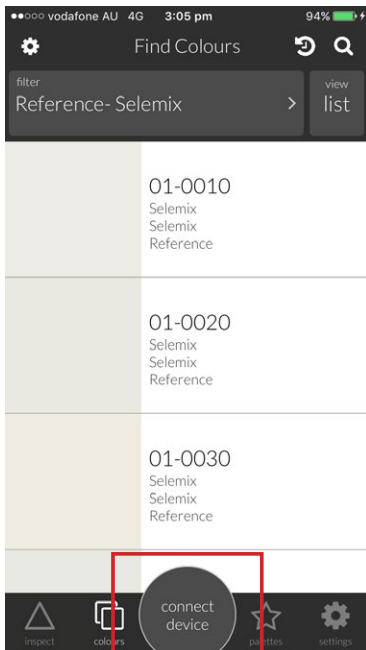
SETUP SELEMIX COLOUR



Now your Colour Picker is setup to only read Selemix colours.

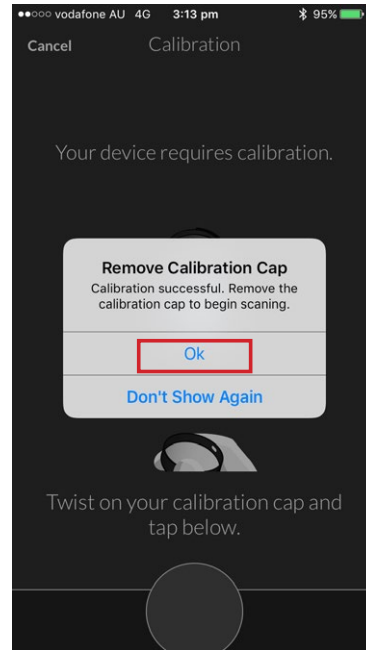
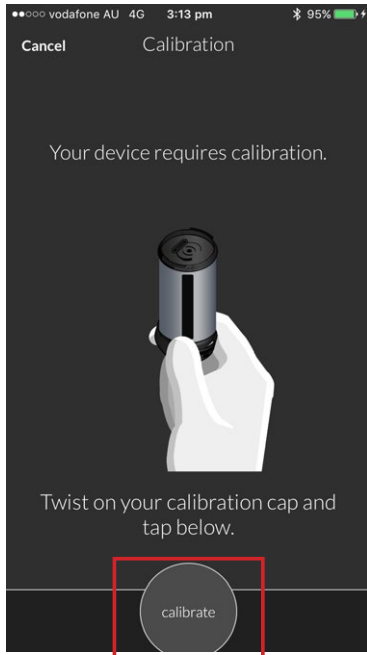
CONNECT

Switch on the *Selemix* Colour Picker by pressing the button on the back. Ensure Bluetooth is enabled on your device, open the Selemix App and press 'Connect Device'. Follow the on-screen prompts to connect your device.



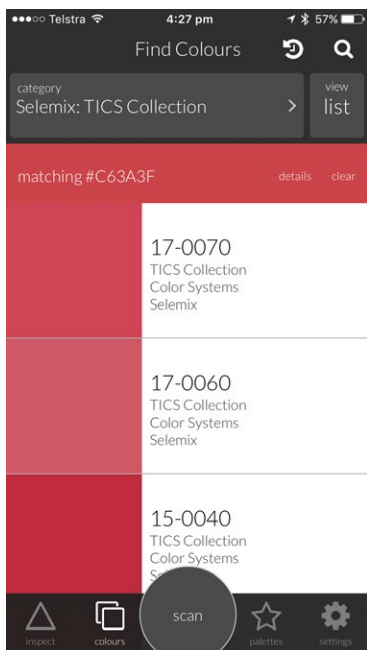
CALIBRATE

After the device is connected it will advise you to calibrate. Ensure the calibration lid is attached and press 'Calibrate device'. The SELEMIX App informs you when the calibration is complete.



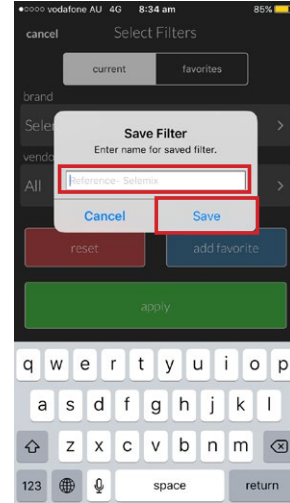
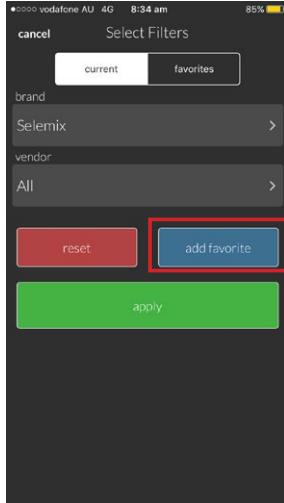
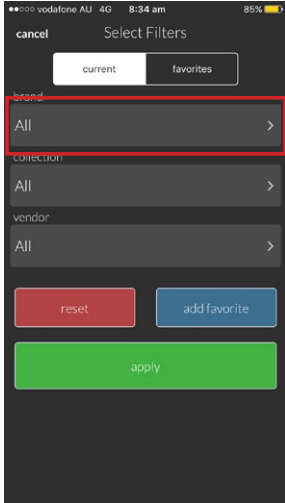
SCAN

Remove the calibration lid and **attach it to the opposite end**. Place the Selemix colour picker on the surface you wish to read and press 'Scan Color'. Moments later, the closest matching colour will appear on the Selemix App. *The app provides a number of colour match options. The first option listed isn't always the best match. This product is to be used as a guide only.*

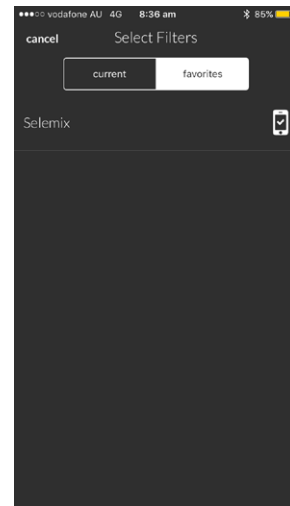
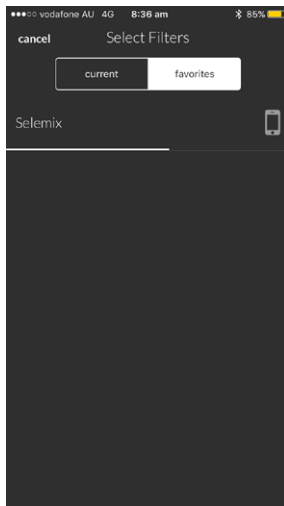
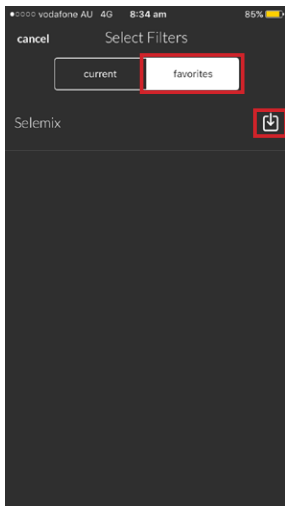


Please Note: by attaching the calibration lid to the opposite end reduces the risk of mis-placing and damaging the lid. Once calibration lid is lost or damaged the Colour Picker can no longer be used.

The Selemix App can be used offline by saving the selemix database onto the phone. **This setup process must be done while connected to the internet/ phone data.** First go into the filter settings and inside brand, select Selemix and ok. Next press the 'add favorite' button. Create a name for this favourite (eg. Selemix) and press save.



Press the 'favorites' tab at the top and your new saved favourite should appear. On the right side there will be a download icon. Press this icon to commence saving the database to your phone. Once completed, Select the saved favourite and it should load the Selemix colours.



When working offline, the saved database should appear automatically. If it doesn't load, simply go through your filter favourites and select your saved database.

FILTER SETTINGS

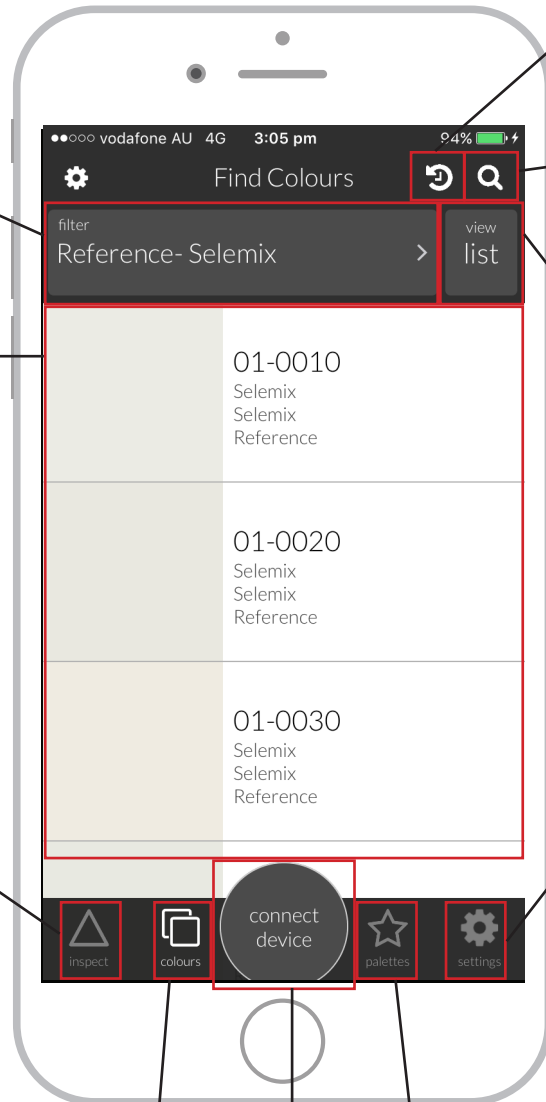
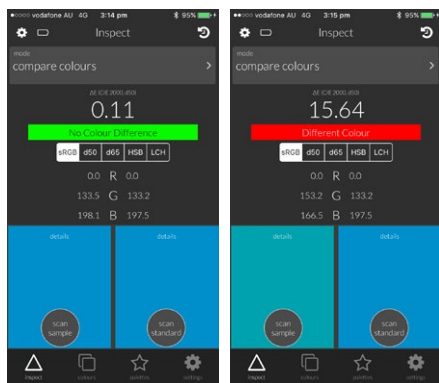
use this drop-down to set your filter to Selemix Colours.

SCANNED COLOURS INFORMATION

Once a surfaced is scanned, the swatches will be listed here. Press the swatch to display the swatch description in detail.

INSPECT

The inspect option brings up a comparison screen where you can compare and match different areas of the scanned surfaces.



SCAN HISTORY

Displays previous swatch colours scanned

SEARCH SWATCH COLOURS

Search a swatch code to bring up the colour details.

VIEW

Change how the scanned swatches are displayed on your screen.



SETTINGS

Go here to update account details, manage your Colour Picker device, redeem code, and logout.



COLOURS

This is the screen currently displayed. It is the scanned swatches listed.

PALETTES

Create your own palettes with scanned swatches.

CONNECT DEVICE/ SCAN

Connect Colour Picker. Once connected, this button is used to scan.